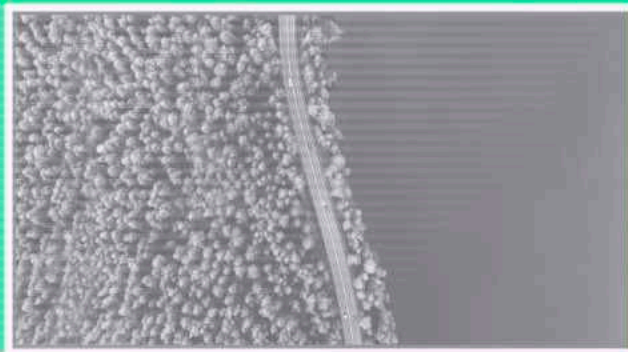
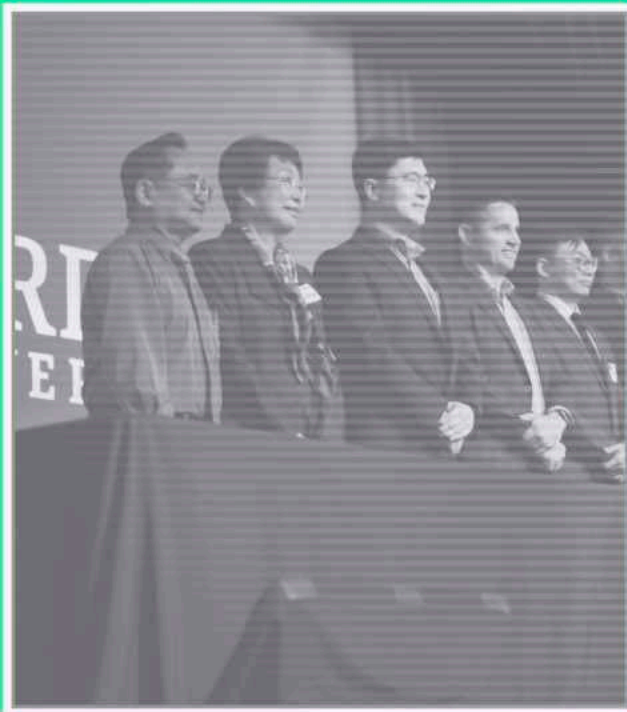




Re
ELEMENT
TECHNOLOGIES

A central graphic featuring a large green arrow pointing to the right, which frames the company logo. The logo consists of the word 'Re' in a large, bold, sans-serif font, followed by 'ELEMENT' and 'TECHNOLOGIES' in smaller, all-caps, sans-serif fonts.

FINITE RESOURCES MADE INFINITE

ReElement Technologies Corporation

Forward-Looking Statements

This document may include predictions, estimates or other information that might be considered forward-looking. While these forward-looking statements represent our current judgment on what the future holds, they are subject to risks and uncertainties that could cause actual results to differ materially. You are cautioned not to place undue reliance on these forward-looking statements, which reflect our opinions only as of the date of this presentation. Please keep in mind that we are not obligating ourselves to revise or publicly release the results of any revision to these forward-looking statements in light of new information or future events. Throughout this document, we will attempt to present some important factors relating to our business that may affect our predictions. You should also review any and all SEC filings of each respective company for a more complete discussion of these factors and other risks, particularly under the heading “Risk Factors.”

This document is neither an offer to sell nor a solicitation to purchase any of the Company’s securities. Certain statements and financial projections in this Presentation constitute “forward-looking statements” within the meaning of the Private Securities Litigation Reform Act of 1995. Forward-looking statements, which are based on management’s current expectations, are generally identifiable by the use of terms, such as “anticipates,” “believes,” “could,” “estimates,” “expects,” “intends,” “may,” “plans,” “possible,” “potential,” “predicts,” “projects,” “should,” “would” and similar expressions. The potential risks and uncertainties that could cause actual results to differ materially from those expressed or implied herein include, among others, the Company’s ability to raise additional debt or equity financing, the Company’s relationships with its current and future customers and business partners, the Company’s ability to achieve anticipated results from acquisitions, and organic growth and development and overall business expansion. All reserve estimates (tonnage, quality, sell ability, etc.) and other number and figures presented herein are management estimates only, may include reserves that are currently under lease negotiation (i.e., not currently controlled), and should be independently verified.

The non-reserve deposit numbers presented herein are estimates based on available data and the interpretation of such data by the company and/or its advisors and/or consultants and are not classified as “proven” or “probable” pursuant to the definitions found within SEC’s Industry Guide 7. Not all non-reserve deposits are permitted, and certain reserve numbers may include figures under permit, permit in-process or leased, and in some cases prior leases that have lapsed and need to be re-obtained.

This presentation and the information herein is updated frequently, and you should absolutely verify with management of the Company that this version is the most recent available. In the event the information presented herein conflicts with Company public filings, the public filings shall be the governing document.

Chromatography: Innovative Separation & Purification

Utilizing a Proven and Longstanding Technology with High-Performing Results

Current Industry Standard: Solvent Extraction:

Requires mixer settlers with a large volumes of organic chemical waste discharge with high waste treatment costs and hazards.



1 meter ~ 1 stage

ReElement's Solution: Chromatographic Separation:

Leverages a much higher interfacial area producing equivalent throughput of high-purity materials with near zero waste treatment cost.



1 meter ~ 100 stages

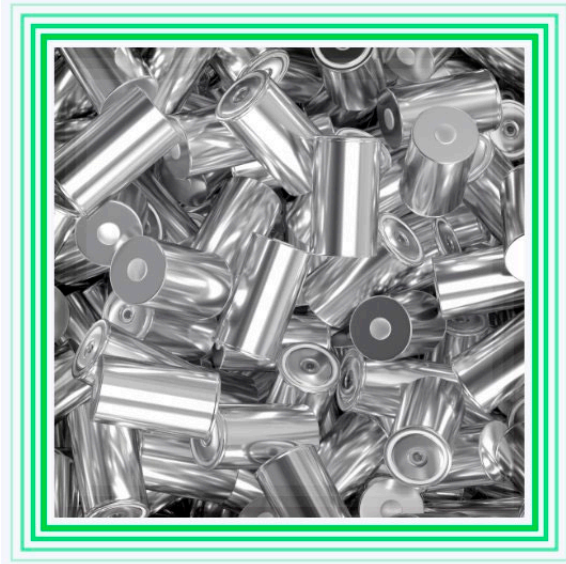
Powered by ReElement: Feedstock Agnostic Refining

Refining-as-a-Service for all Battery Mineral Feedstock Types



Natural Mineral Feedstock

- Lithium Spodumene Ores
- Lithium Lepidolite Ores
- Lithium Mineral Brines



Recycled Batteries

- End-of-Life Li-Batteries
- Off-Spec Li-Batteries
- Shredded Li-Batteries



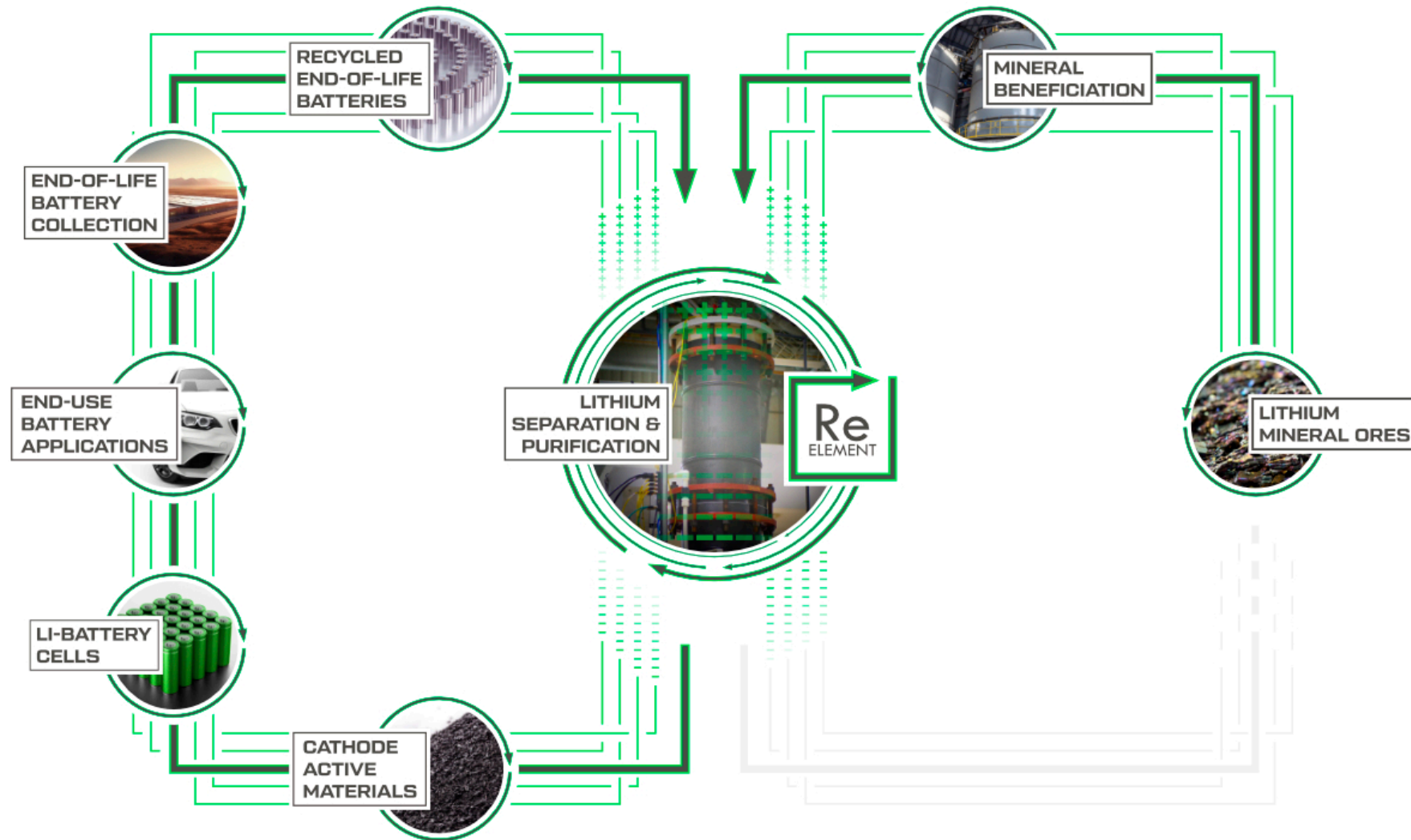
Li-Battery Black Mass

- LFP Black Mass
- NMC Black Mass



CAM & Battery Cell Manufacturing Byproducts

Battery-to-Battery & Mine-to-Battery Refining





FINITE RESOURCES MADE INFINITE
FINITE RESOURCES MADE INFINITE
FINITE RESOURCES MADE INFINITE
FINITE RESOURCES MADE INFINITE
FINITE RESOURCES MADE INFINITE

ReElement Technologies

www.ReElementTech.com ▫ info@ReElementTech.com ▫ [@ReElementTech](https://twitter.com/ReElementTech)

