

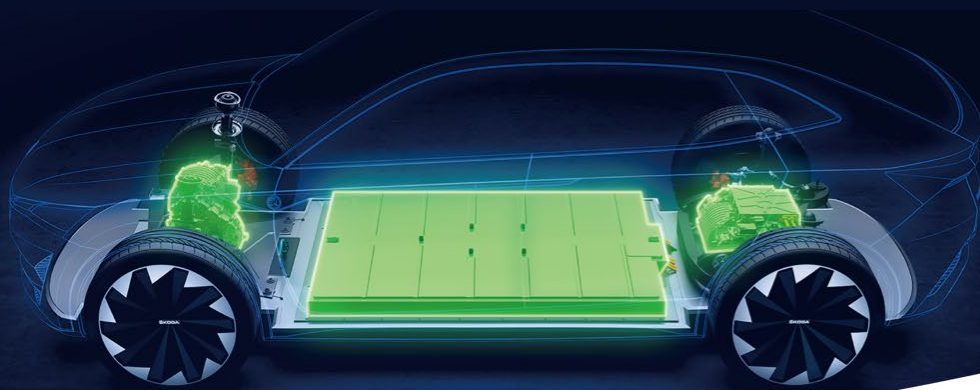


**SHERWIN
WILLIAMS**

NAATBATT 2025
EXTENDING RANGE

Coating Solutions for EV

SESSION 3B-6
WEDNESDAY
FEB 19, 2025

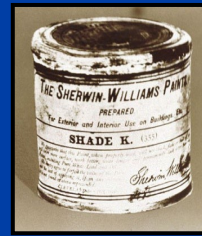


SHERWIN-WILLIAMS
General Industrial Coatings

SHERWIN-WILLIAMS®

About Us

* **Founded : 1866**
* **Corporate Office:**
Cleveland, OH USA



\$23.1 billion

2024 Net Sales

64,000+



Employees

5,000+



Stores and Branches

120+

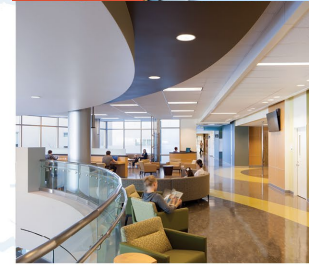


Countries

130+



Manufacturing & Distribution Facilities



INDUSTRY-LEADING PORTFOLIO OF BRANDS



SHERWIN-WILLIAMS.

valspar



Purdy



Thompson's
WaterSeal



SHERWIN-WILLIAMS.

Performance Coatings Group

\$6.8 billion

2024 Net Sales

120+

Countries

BUSINESSES

- Automotive Finishes
- Coil Coatings
- General Industrial Coatings
- Industrial Wood Coatings
- Packaging Coatings
- Protective & Marine Coatings



KEY DIFFERENTIATORS

Local service model, highly specified coatings, global expertise, product innovation, color solutions, customer-focused



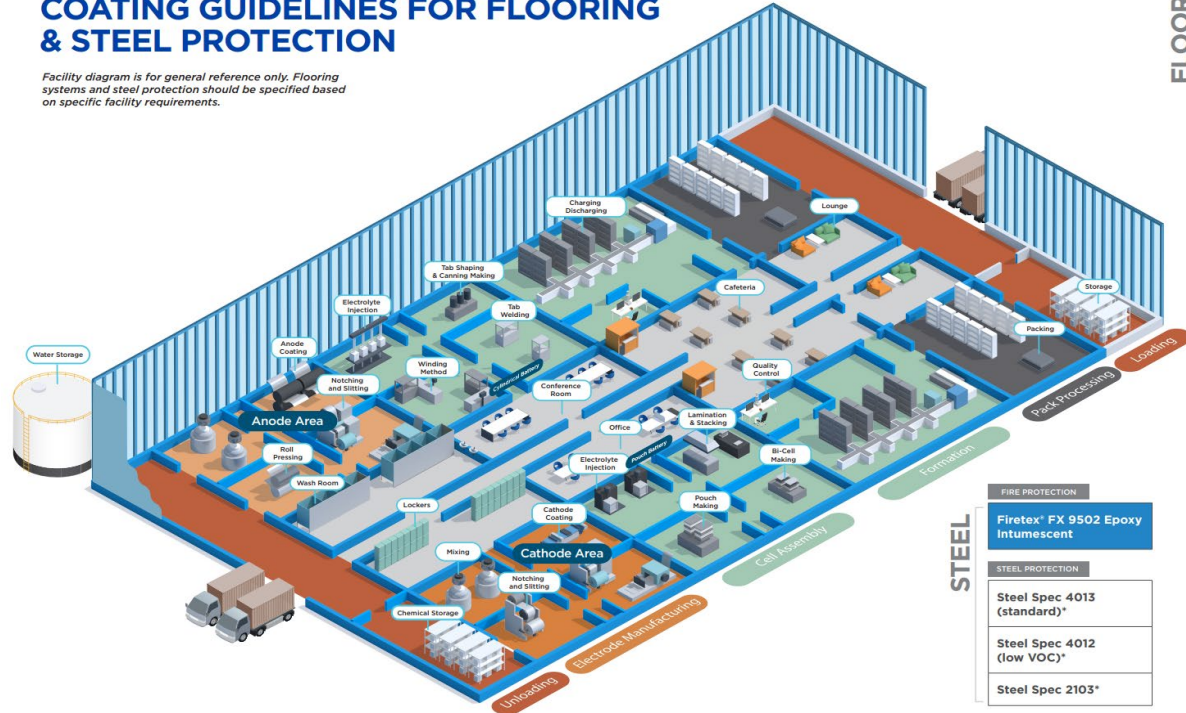
Coating Solutions for EV

PROTECTIVE & MARINE DIVISION

EV BATTERY MANUFACTURING FACILITY COATING GUIDELINES FOR FLOORING & STEEL PROTECTION

Facility diagram is for general reference only. Flooring systems and steel protection should be specified based on specific facility requirements.

Download



STEEL

FIRE PROTECTION

Fireretx[®] FX 9502 Epoxy Intumescent

STEEL PROTECTION

Steel Spec 4013 (standard)*

Steel Spec 4012 (low VOC)*

Steel Spec 2103*

FLOORING

High NMP Chemical Resistance
Resufloor[™] Scred TG46 Advanced NMP Performance EV (epoxy based mortar system with urethane topcoats)

14 DAY

High NMP Chemical Resistance
FasTop[™] Advanced NMP Performance EV (urethane concrete based system with urethane topcoats)

14 DAY

High NMP Chemical Resistance
Resufloor[™] Advanced NMP Performance EV (epoxy based system with urethane topcoats)

14 DAY

Moderate NMP Chemical Resistance
Resufloor[™] Scred TG46 EV (epoxy based mortar system with urethane topcoat)

7 DAY

Moderate NMP Chemical Resistance
FasTop[™] NMP Performance EV (hybrid urethane concrete based system)

7 DAY

Moderate NMP Chemical Resistance
Resufloor[™] NMP Performance EV (epoxy based system with urethane topcoat)

7 DAY

Static Control
Resufloor[™] SDU EV (ESD epoxy based system with urethane topcoat)

7 DAY

Decorative
Resufloor[™] DSS EV (epoxy based system with urethane topcoat)

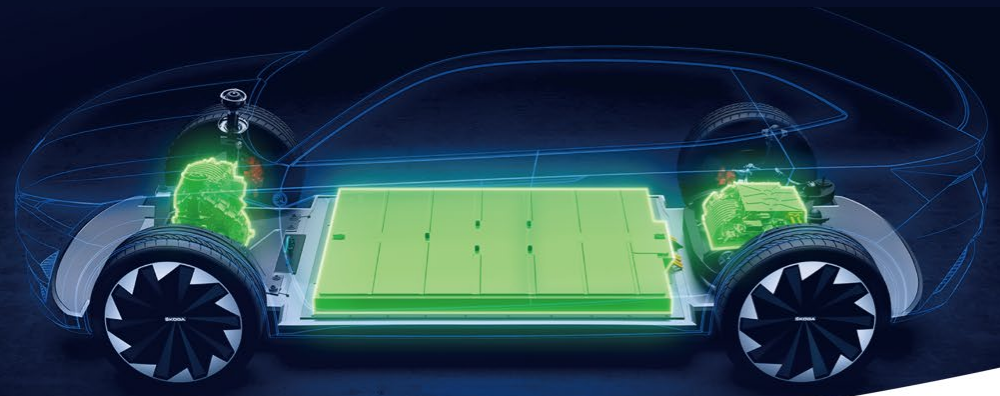
7 DAY

Polished Concrete
Cemlack[™] Hydro Polish System



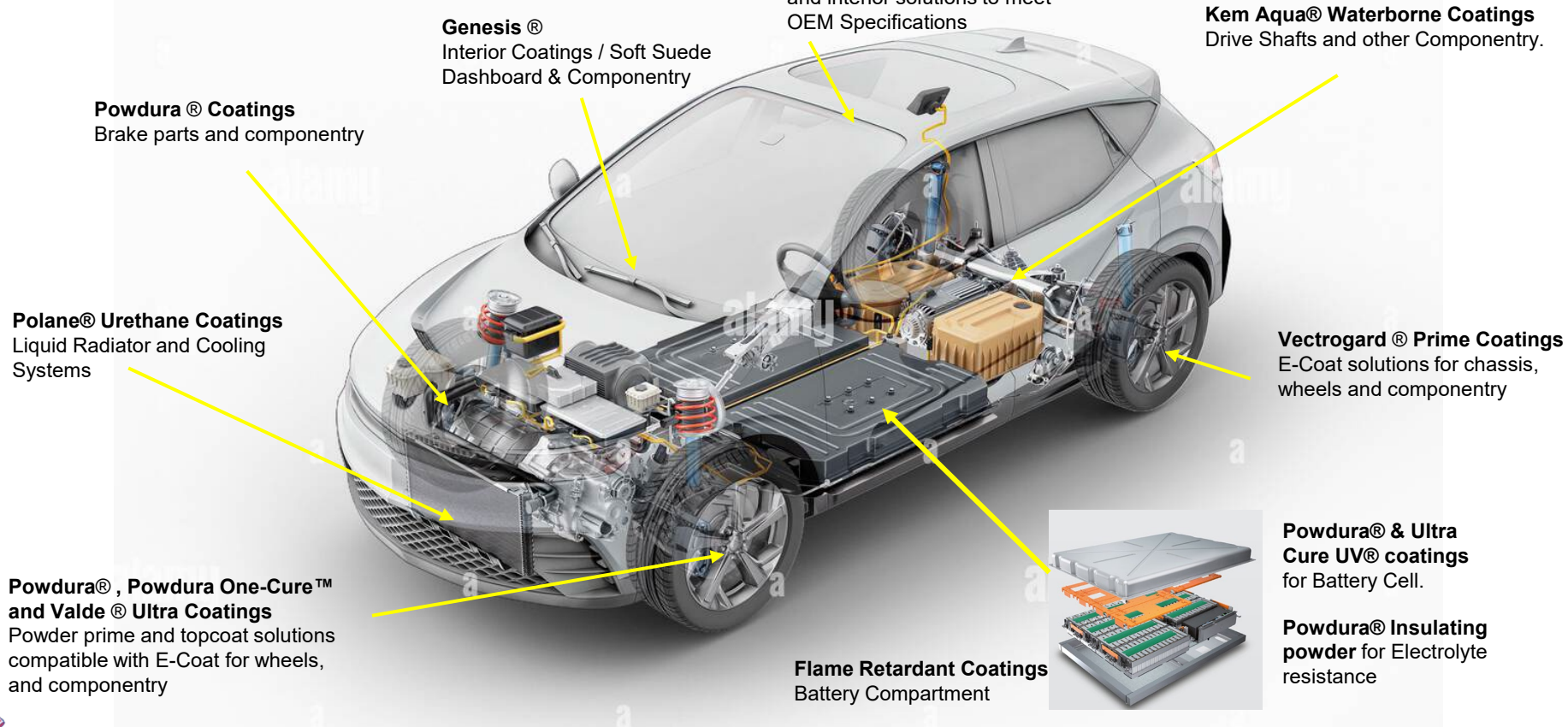
Powdura[®]

Coating Solutions for EV



Automotive Product Portfolio

SHERWIN-WILLIAMS



Powdura® Coatings
Brake parts and componentry

Genesis®
Interior Coatings / Soft Suede
Dashboard & Componentry

Polane® Urethane Coatings
Liquid Radiator and Cooling
Systems

**Powdura®, Powdura One-Cure™
and Valde® Ultra Coatings**
Powder prime and topcoat solutions
compatible with E-Coat for wheels,
and componentry

Genesis® Coatings
Liquid primers, topcoats,
direct-to-metal, clear coats,
and interior solutions to meet
OEM Specifications

Kem Aqua® Waterborne Coatings
Drive Shafts and other Componentry.

Vectrogard® Prime Coatings
E-Coat solutions for chassis,
wheels and componentry

Flame Retardant Coatings
Battery Compartment

**Powdura® & Ultra
Cure UV® coatings**
for Battery Cell.

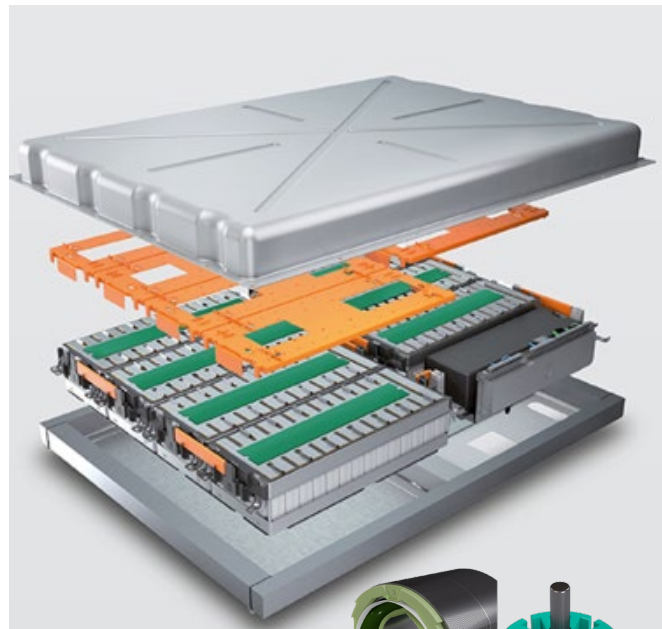
**Powdura® Insulating
powder** for Electrolyte
resistance

Powder Coatings:

- High Edge DTM Systems
- Excellent Corrosion Resistance
- High Dielectric Strength
- Insulative Properties
- Electrolyte Resistance
- Meets UL-94-V0 Flame Retardant Cert.
- Passes 85/85 Test

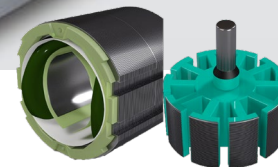
E-COAT:

- Excellent Corrosion Resistance
- High Edge Build Formula



Coatings For:

- Battery Cell
- Battery Module
- Busbar
- Cooling plate
- BBU
- Cabinet
- Rotors / Stators

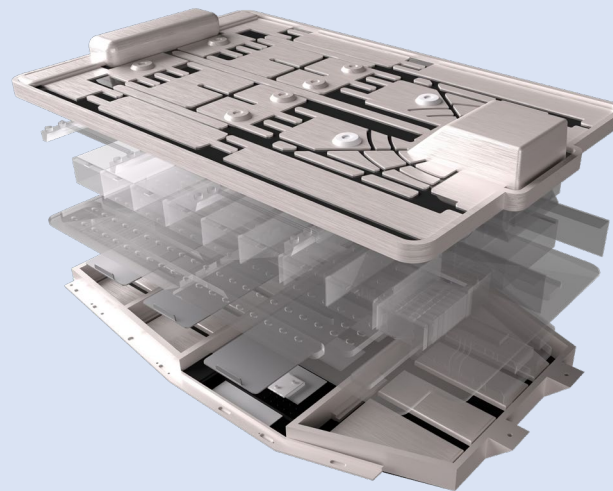




SHERWIN-WILLIAMS®

Fire Protective Coating

- **NEW** – Novel fire protective coating in development**
- Battery Enclosure Thermal Runaway (BETR) Testing
- UL 2596 Tested
- Patent Pending



**Proprietary – Ask to meet to discuss!

⚡ Charging Stations ⚡



Product advantages

- Excellent weather resistance
- Good chemical resistance
- Excellent durability performance
- Excellent appearance

Available Systems

- Optional non-TGIC curing
- One Cure System®
- UL 1332 / DT0V2 Listed
- High Edge Build Formulations

⚡ Energy Storage Systems ⚡



Physical Property	Test Method	Performance Result
Environmental Aging	QUVA 1000 h Xenon lamp 2000 h	Pass, 95% gloss retention
Salt Spray	GB/T1771-2007	1000 Hrs
Pencil Hardness	GB/T6739-1996	2H
Impact Resistance	GB/T1732-1993	50KG Direct impact, no cracking
Adhesion	GB/T9286-1998	Level 0

Sherwin-Williams Powdura® Super Durable Powder Coating

Suitable for charging piles, energy storage cabinets and other related power equipment



SHERWIN-WILLIAMS.



Kevin Linscheid

Global Market Manager
EV Battery/Automotive Coatings
kevin.w.linscheid@sherwin.com



Kristin Meyers

Marketing Segment Manager –
EV/Battery/Automotive Facilities
kristin.meyers@sherwin.com

