

NETZSCH

Proven Excellence.

The NETZSCH Group February 2025

Tom Evans, Market Manager - Battery
tom.evans@netsch.com, 1.847.975.3875

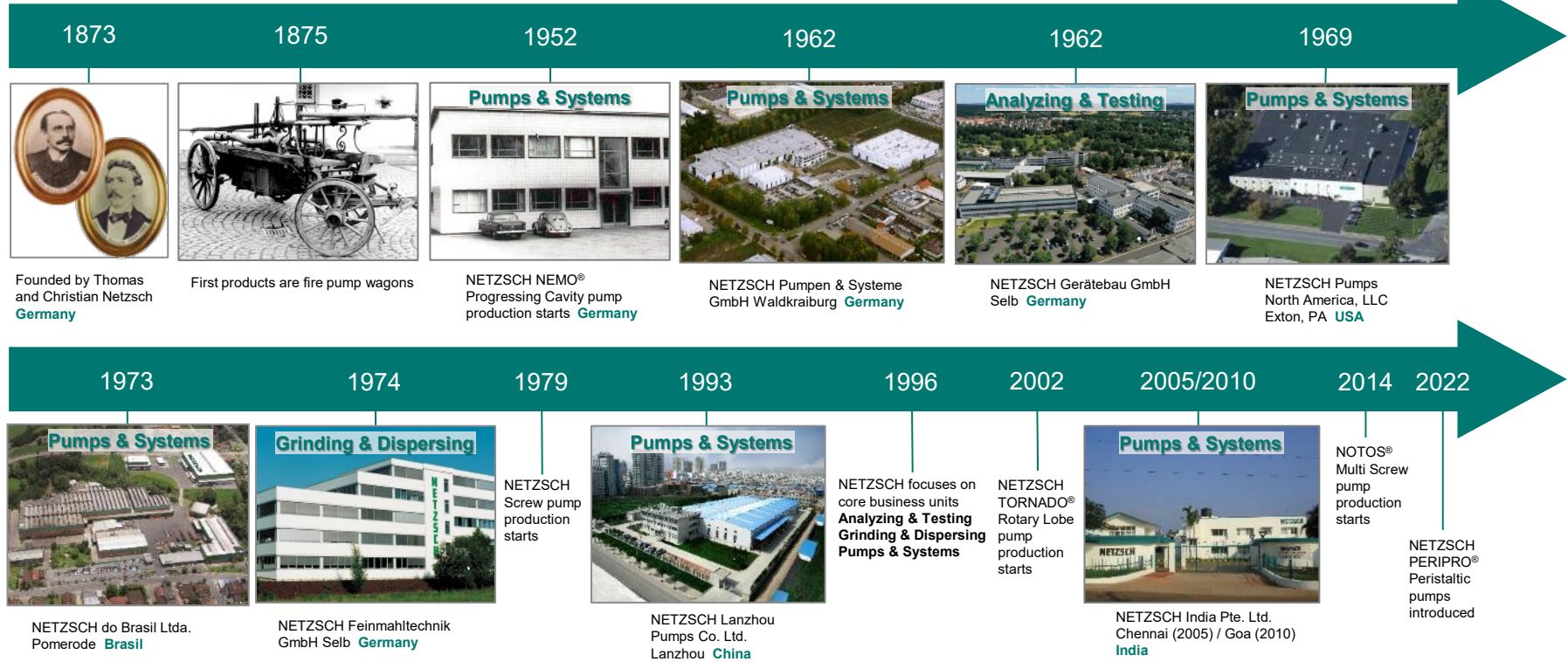
NETZSCH Pumps USA

The NETZSCH Group

150 Year History

NETZSCH

- Continuous advancement and responsible management ensure continuity in the hands of the family.
- Management responsibility of the NETZSCH Group is currently held by the 5th generation.



Erich NETZSCH GmbH & Co. Holding KG



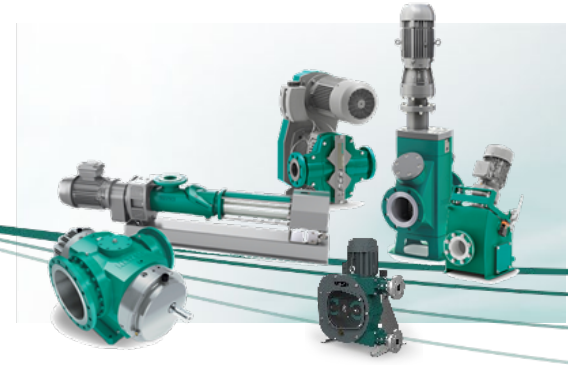
Analyzing & Testing

Thermoanalytical instruments and instruments for the determination of thermophysical properties



Grinding & Dispersing

Comprehensive machine portfolio for wet and dry grinding, mixing, dispersing, homogenization and classification



Pumps & Systems

Innovation leader for the four positive displacement pump technologies: progressive cavity, rotary lobe, peristaltic and multi screw pumps

The Analyzing & Testing Business Unit is a global leader in the field of thermal characterization of nearly all materials over a temperature range of -260°C to 2800°C / -436°F to 5072°F . Analyzing & Testing offers complete solutions for;

- **Thermal Analysis**
- **ARC and Battery Calorimetry**
- **Rotational and Capillary Rheometry**
- **Evolved Gas Analysis**
- **Equipment sizes from laboratory to production scale**

Many instruments have been designed to work in specialized locations like gloveboxes. Contract testing services available.



The Grinding & Dispersing Business Unit is the world's market leader in wet and dry processing technology offering an extensive product range from laboratory to production sized machines, including;

- **Wet & Dry Grinding**
- **Impact Mill & Jet Mill**
- **Graphite Rounding**
- **Planetary Mixer**
- **Inline Mixing / Dispersion systems**
- **Equipment sizes from laboratory to production scale**

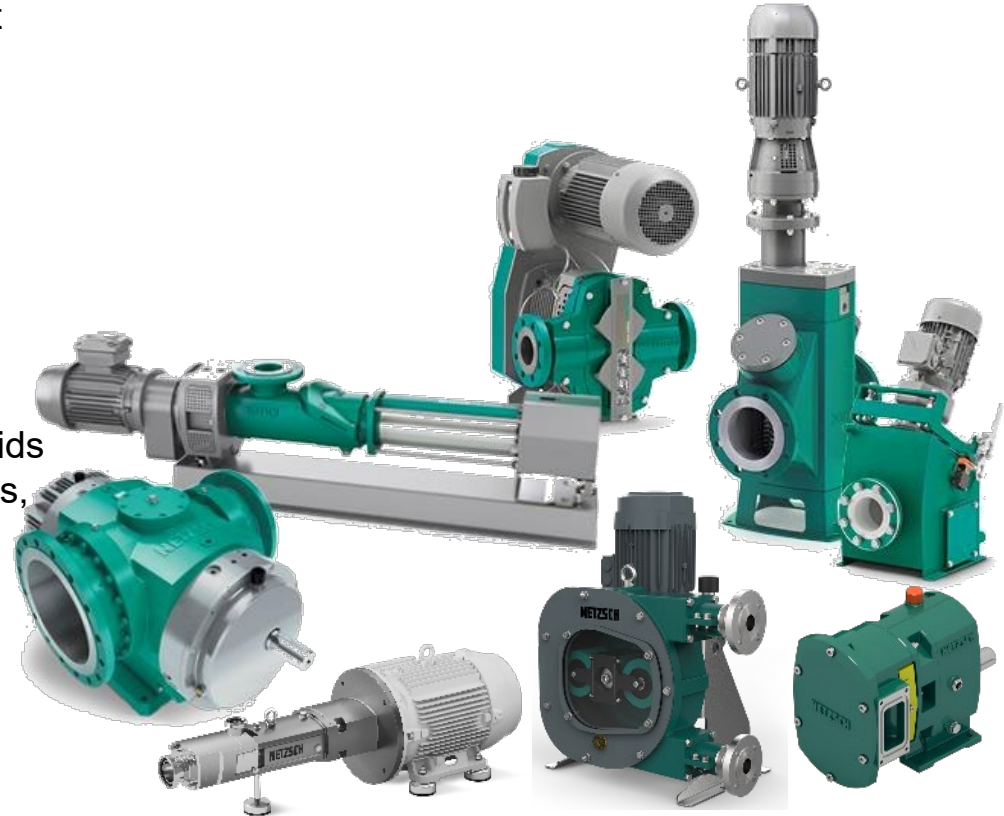
Wet and dry grinding systems are available for different grinding tasks down to the nanometer range as well as mixers, kneaders or dispersers for low to high-viscosity products.



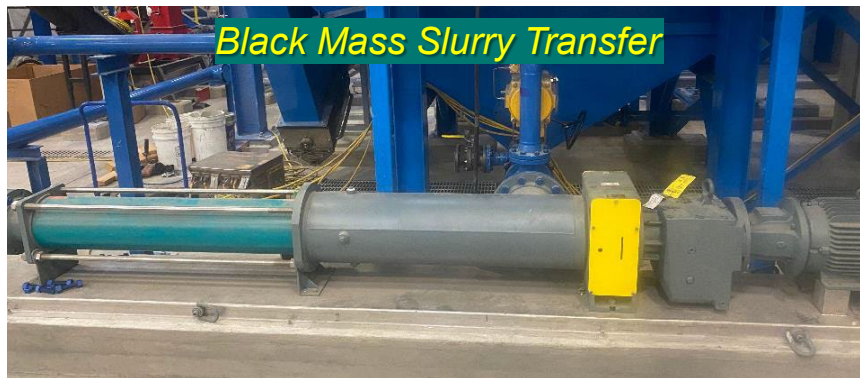
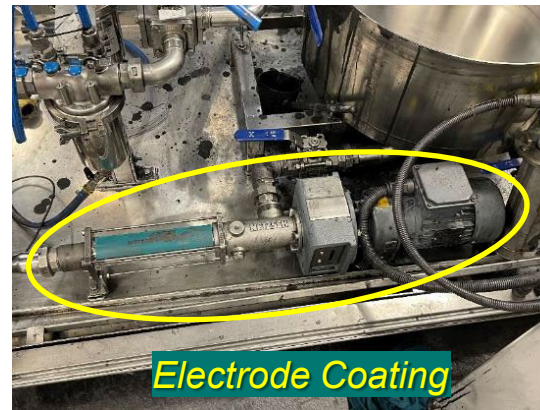
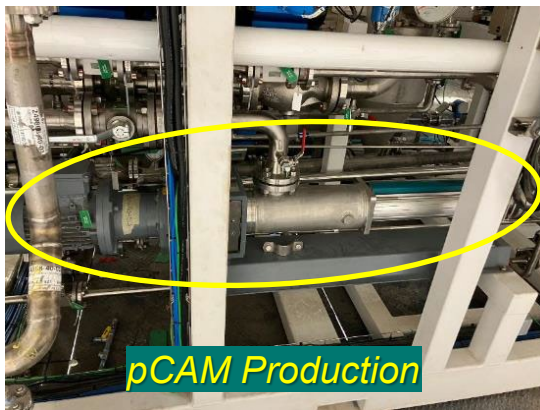
The Pumps & Systems Business Unit is a market and innovation leader for the four positive displacement pump technologies;

- **Progressing Cavity pumps**
- **Peristaltic (hose) pumps**
- **Rotary Lobe pumps**
- **Multi Screw pumps**
- **Equipment sizes from laboratory to production scale**

Wide range of pumps for transferring complex fluids containing solids, abrasives, hazardous chemicals, often having high viscosities and gases.



Pumps & Systems is engaged in the entire Li-ion battery market life cycle – from mineral refining to recycling



Pumps & Systems developed the new NEMO® Progressing Cavity Battery Industry Pump

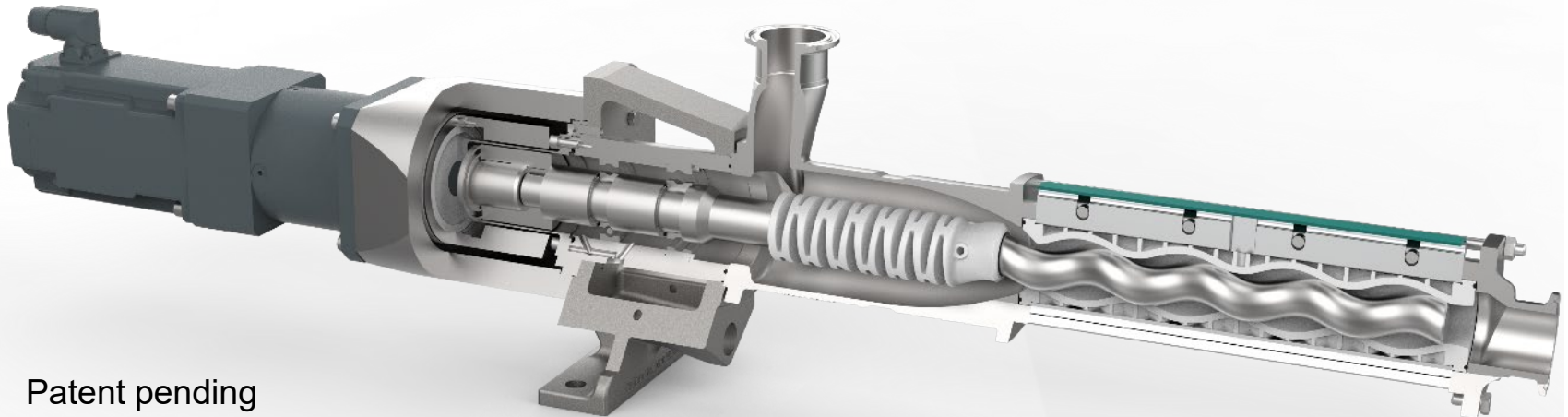
- No wetted wearing metal pump components – eliminates metal particle contamination of the slurry
- Magnetic drive coupling eliminates shaft seal – no leaks, vapor emissions, air ingress / bubble formation
- New proprietary materials and design – aids clean in place maintenance between coating runs

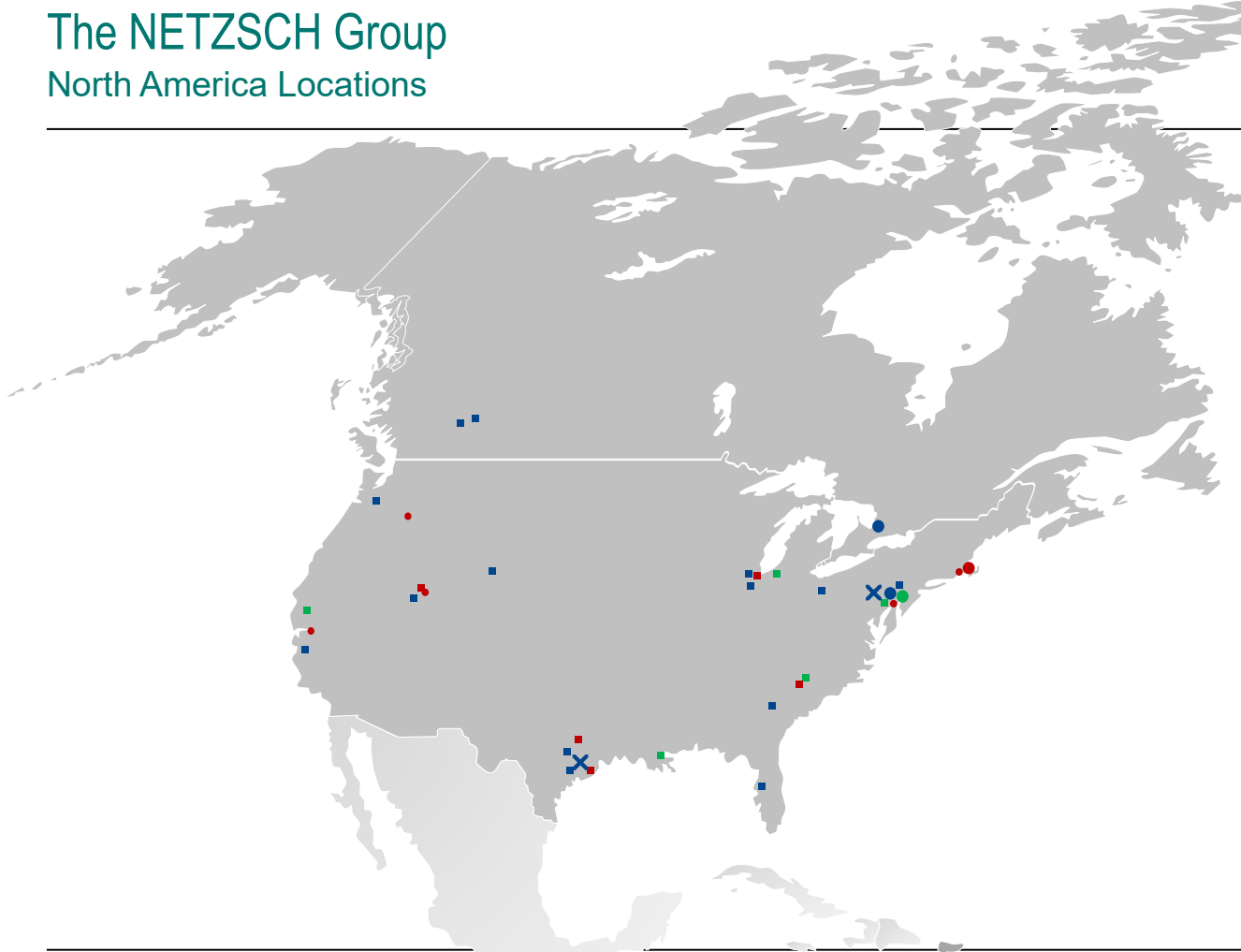
Electrode slurry coating pumps

Electrode slurry preparation / mixing pumps

Slurry transfer / recirculation pumps

Battery recycling process pumps





- Analyzing & Testing HQ's**
Burlington, MA
 - Sales Offices
 - Sales and Service Centers
- Grinding & Dispersing HQ's**
Exton, PA
 - Sales Offices
 - Sales and Service Centers
- Pumps & Systems HQ's**
Exton, PA
 - Sales Offices
 - Sales and Service Centers
 - ✕ Manufacturing / Assembly Plants

NETZSCH

Proven Excellence.

You can rely on NETZSCH.

Tom Evans, Market Manager - Battery
tom.evans@netzsch.com, 1.847.975.3875

NETZSCH Pumps USA