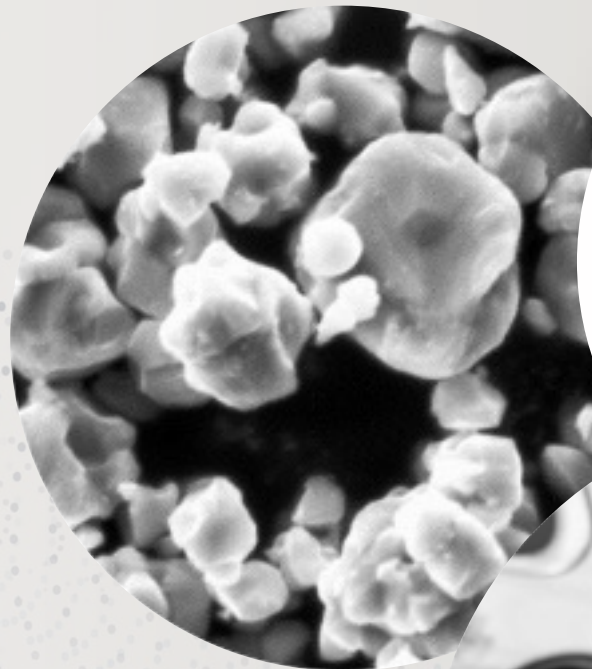


6K UPDATE

NATTBatt 2025



6K
ENERGY



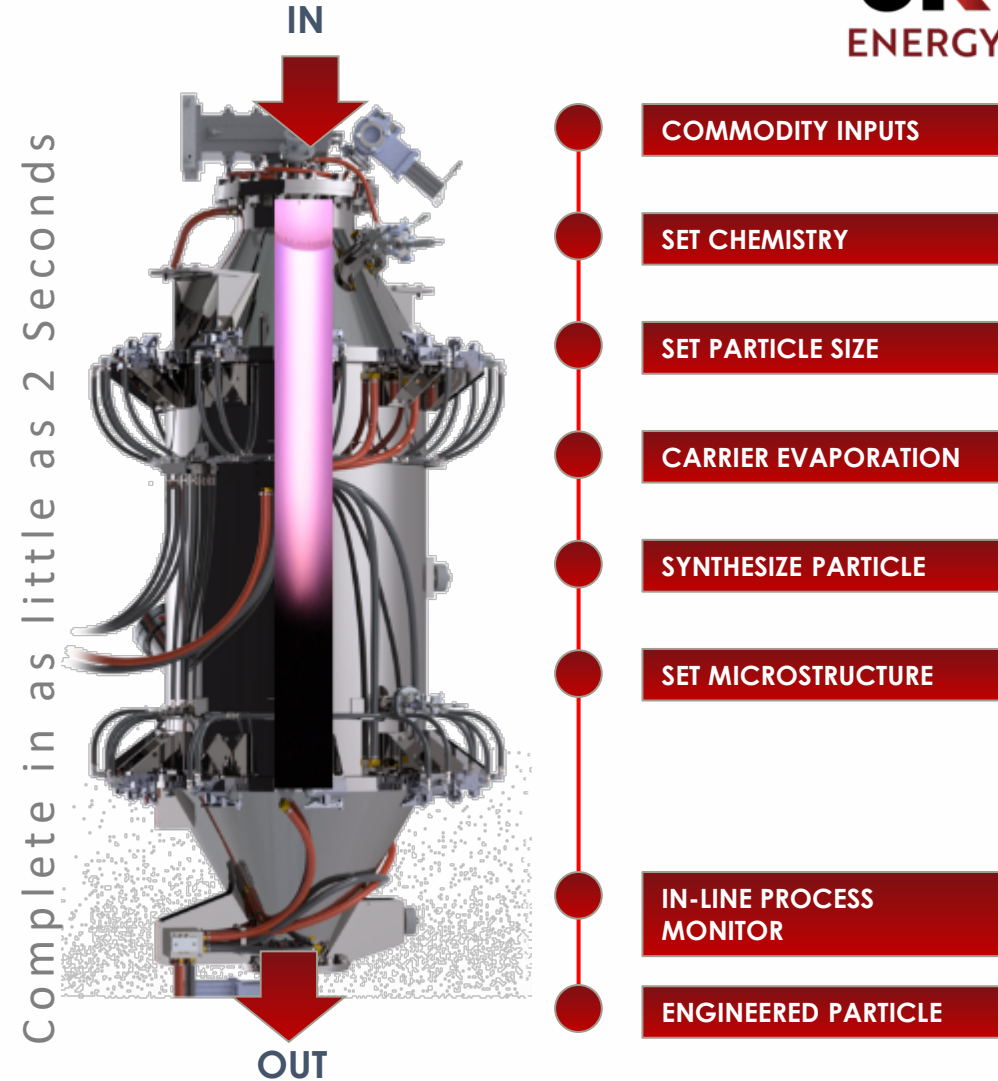
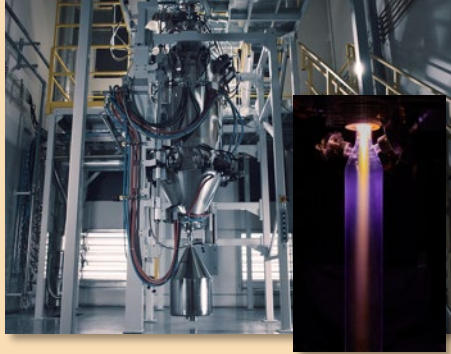
4 content slides for 4-min

- 6K overview
- NMC – combining cost slide + LCA slide
- LFP slide positioning
- LFP slide with est carbon saving w/1-step



Corporate HQ & Microwave plasma (UniMelt®) technology development

BOSTON, MA



6K ADDITIVE

Premium metal 3D powders



- 92% Less Carbon Emissions
- 91% Less Energy

6K ENERGY

Cathode active material



- 60% CO2 Reduction
- 50% Less Energy



Delivering tons/month of NCM & LFP from 6K's Battery Center of Excellence to large cell manufacturers

250

EMPLOYEES

3

BUSINESS DIVISIONS

>\$340M

FUNDING SECURED & COMMITTED

214

PATENT FAMILIES

4

PRODUCTION SITES THROUGHOUT THE USA

Cathode Production Process

Today's Chemical vs. 6K plasma

CLEANER & LOWER COST US production

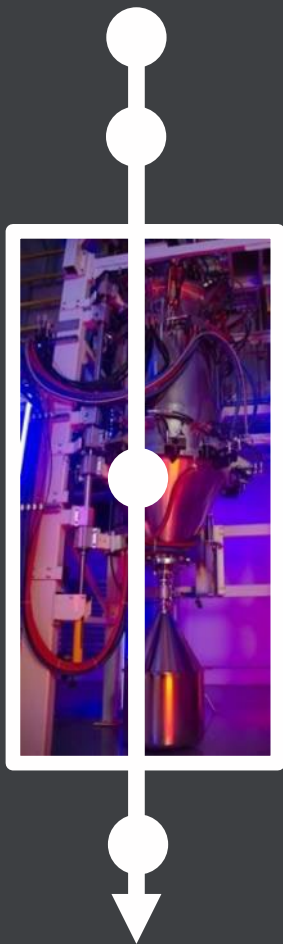
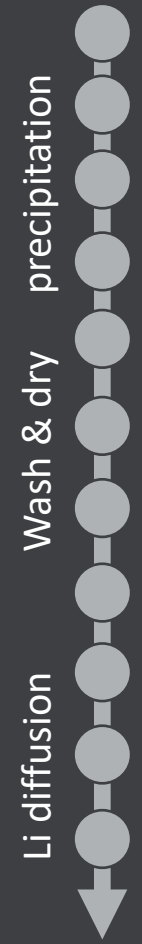
6K collapses production process time by 95% resulting in 50% reduction in conversion cost... EVEN IN THE US

Today's Process

UniMelt

Lower Cost

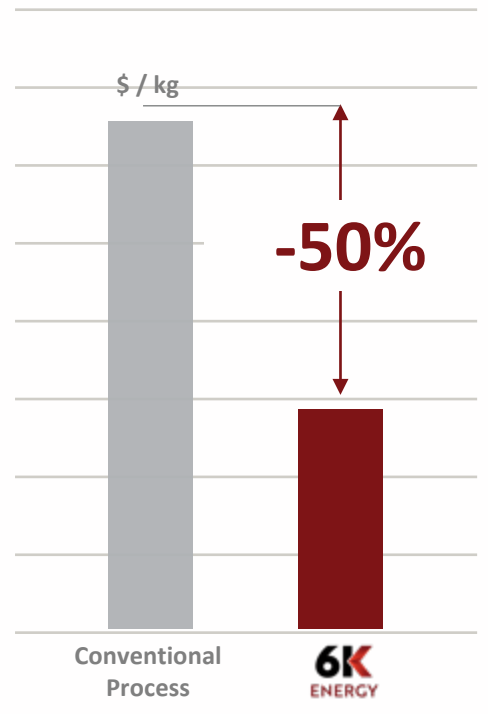
ESG Benefits



VS.

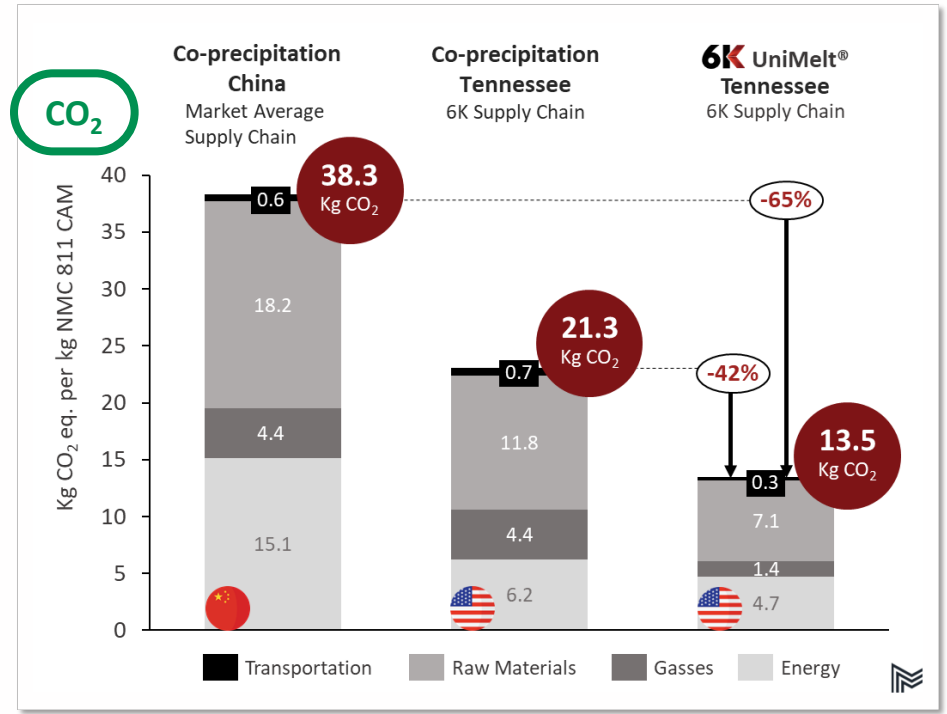
2-3 Days

2 Sec - 3 Hrs



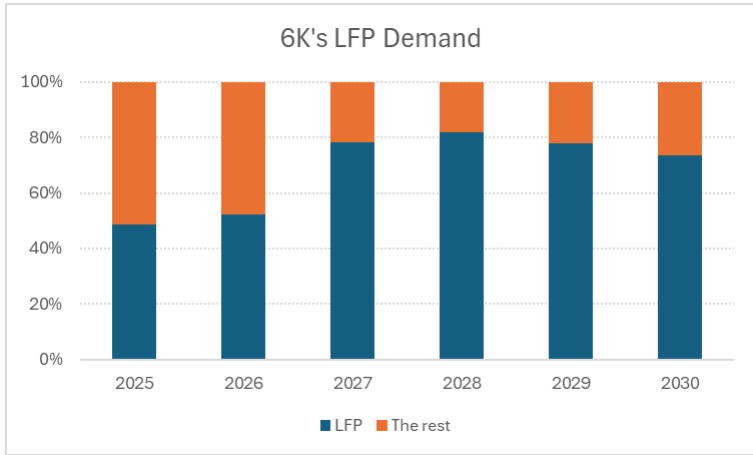
ZW 0 Hazardous waste (ammonia/sulfates)

10x ↓ water usage



Cost will ultimately win, requires new production technology

LFP, the New "It" Chemistry – Doubling LFP Capacity



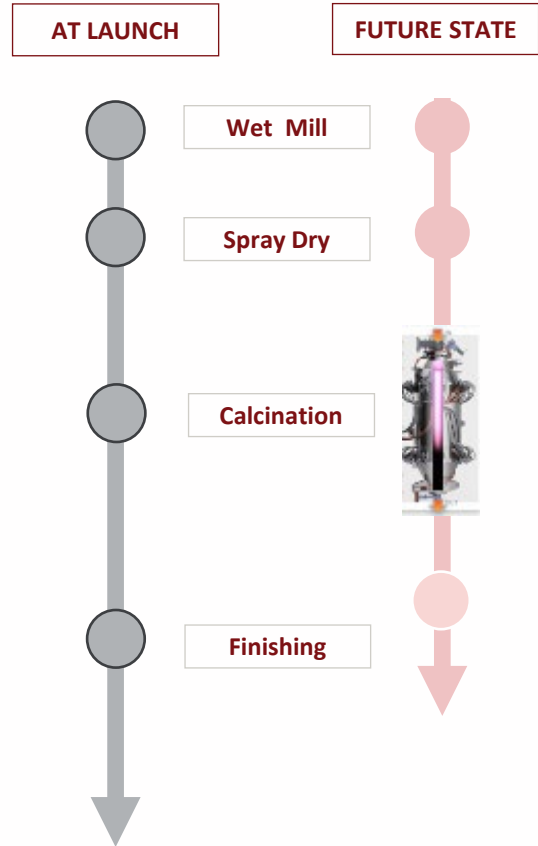
CAPACITY
LFP - 16K tpa
NMC – 6K tpa

LOCATION
Jackson TN

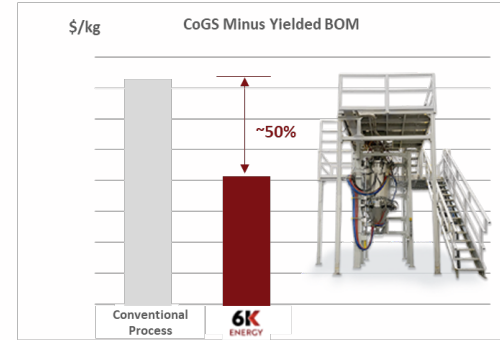
TOTAL EMPLOYEES
230

PRODUCTION AREA
160,000 sqft

- Pilot Production**
- 200k kg/yr - NMC/MO
 - 4000k kg/yr - LFP
- High-volume Production**
- 6M kg/yr - NMC/MO
 - 12M kg/yr - LFP



- Launching with conventional process to meet demand
- Moving to UniMelt-based process to bring cost down



Supply Chain Strategies

- Li**
Lithium ✓
- Ni**
Nickel ✓
- Mn**
Manganese ✓
- Co**
Cobalt ✓

CRITICAL MINERALS

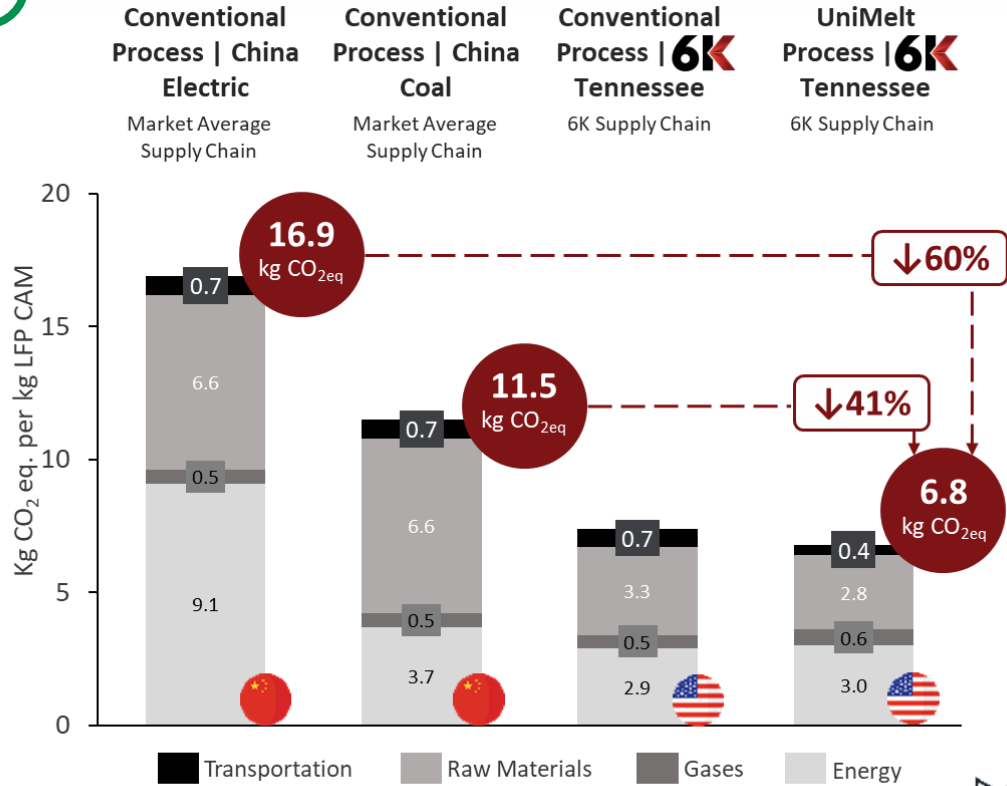
- 2+1 Suppliers per key metals
 - 2 main suppliers
 - “+1” innovative and/or cost reduction supplier
- Domestic and friendly-nations sourcing for critical minerals from day 1 avoiding geopolitics challenges
- Integrating recycling content when appropriate



- 50-acre lot + onsite substation
- Enough space for partners to collocate (2-3)
- Vertically integrated supply chain campus
- Lowering cost for domestic production of battery materials

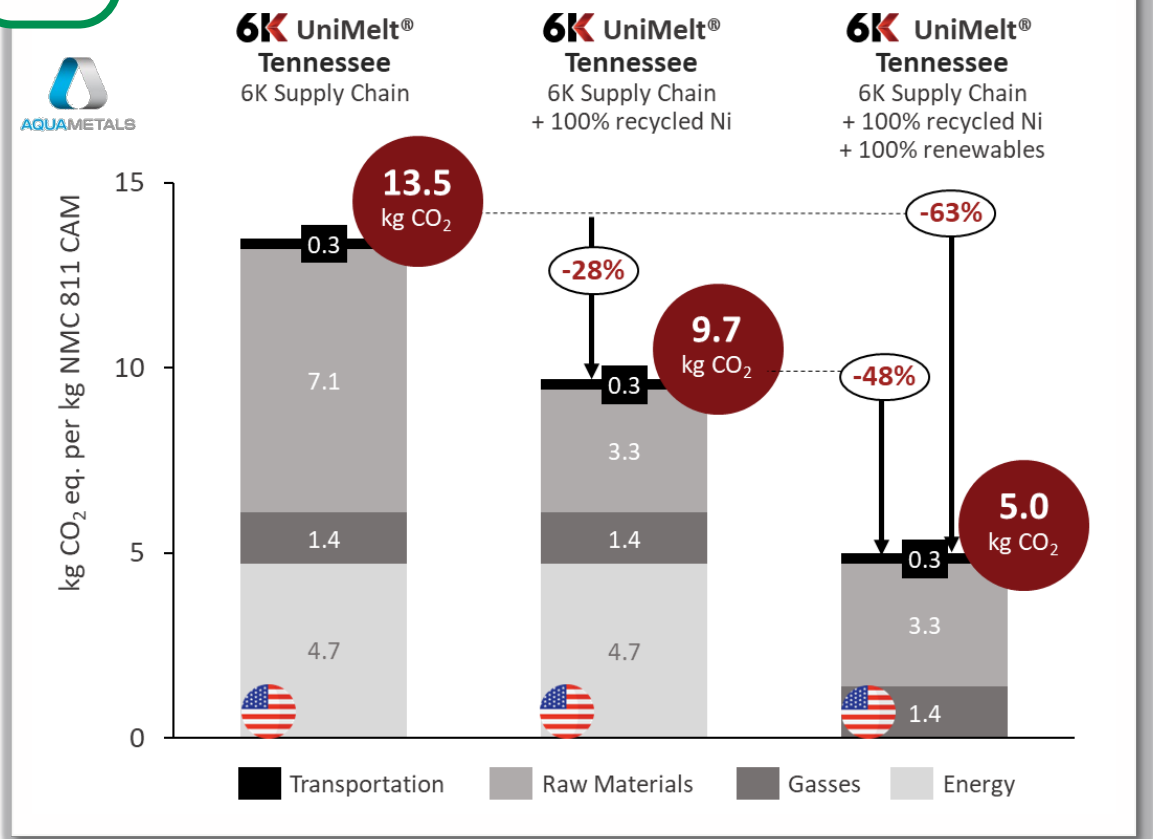
CONTINUE TO LOWER CARBON FOOTPRINT

LFP



- Combination of energy mix and raw materials sourcing contributing to lower CO2 footprint in TN
- Future state with UniMelt-based LFP process could reduce CO2 footprint up to **60%**

NMC

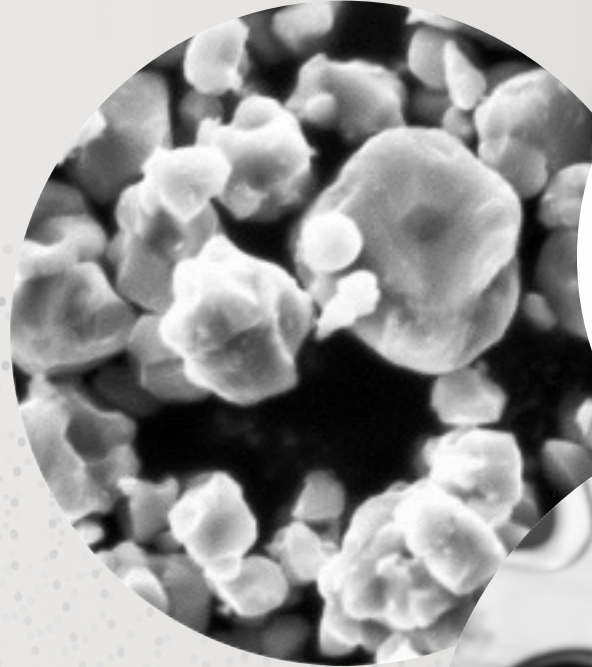


- **Recycled Ni** reducing another 28% of CO2 footprint
- Combination of recycled Ni and 100% renewable could emit only 5kg CO₂/kg NMC – **87% reduction** vs co-precip in China

THANK YOU

THANH NGUYEN

E: thanh.nguyen@6kinc.com

The logo for 6K ENERGY, featuring the number '6' in black, the letter 'K' in red with a white arrow-like shape pointing left, and the word 'ENERGY' in red below it, all within a white circular background.

6K
ENERGY

