



Exponent<sup>®</sup>



# About Exponent

NATTBatt 2025



# About Exponent

Exponent is the only premium engineering and scientific consulting firm with the depth and breadth of expertise to solve our clients' most profoundly unique and urgent challenges.

1967

50+ Years of  
Scientific Excellence

950+

Consulting  
Staff

90+

Technical  
Disciplines

30+

Offices Across North  
America, Europe & Asia



# Our Bespoke Multidisciplinary Teams

## Polymers & Biomedical

Biomedical Engineering & Sciences  
Polymer Science & Materials Chemistry

## Environmental Sciences

Ecological & Biological Sciences  
Environmental & Earth Sciences

## Mechanical & Thermal

Mechanical Engineering  
Thermal Sciences

## Health Science

Chemical Regulation & Food Safety  
Health Sciences

## Transportation

Biomechanics  
Human Factors  
Vehicle Engineering

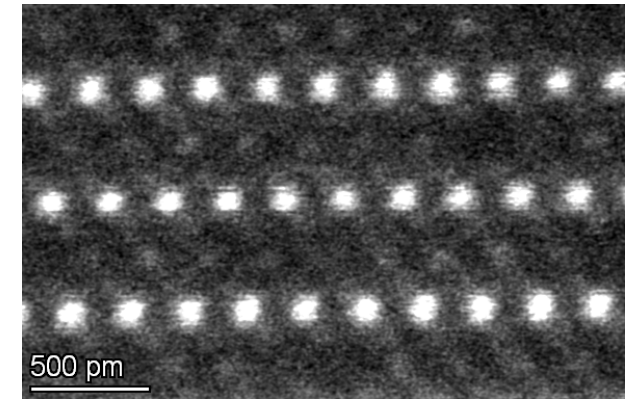
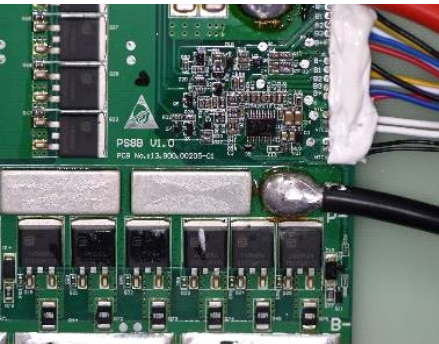
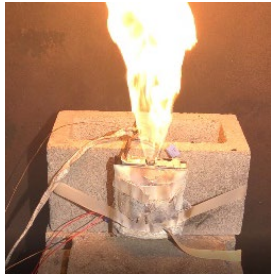
Projects

## Infrastructure & Materials

Buildings & Structures  
Civil Engineering  
Construction Consulting  
Materials & Corrosion Engineering

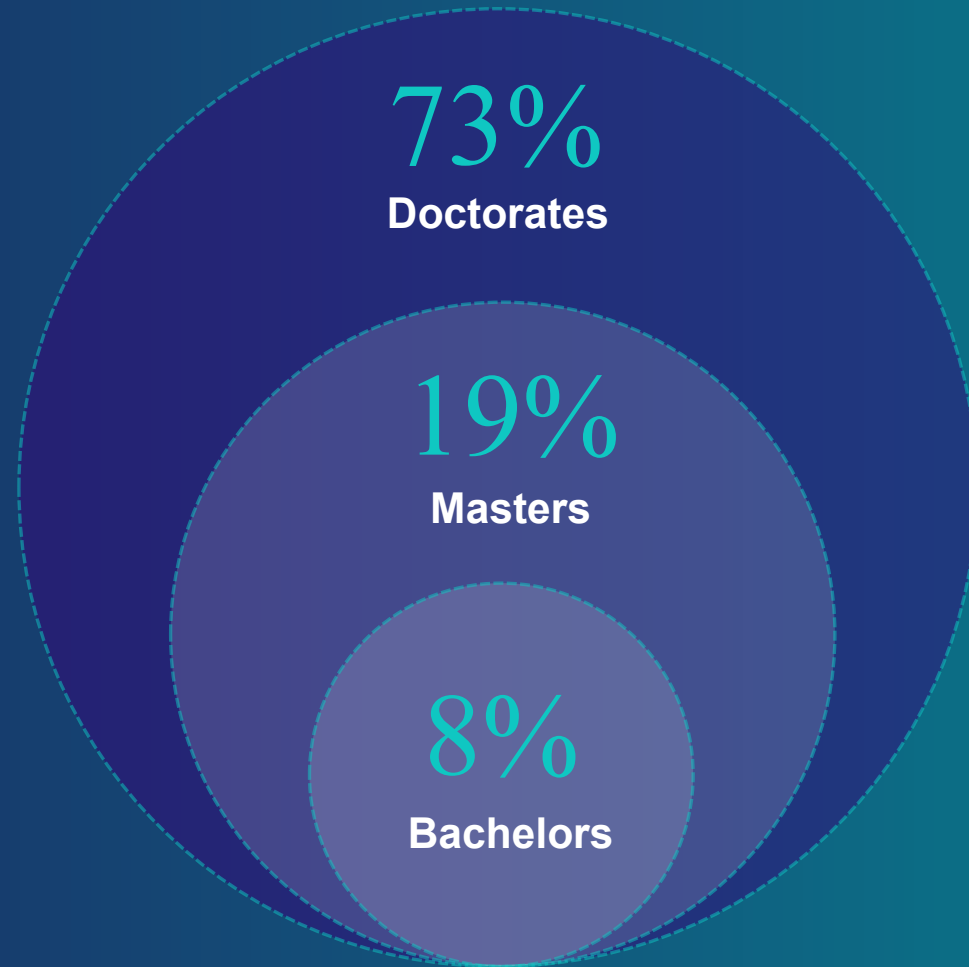
## Electrical & Data Sciences

Data Sciences  
Electrical Engineering & Computer Science



# Our Expertise

Our consultants are thought leaders in their areas of expertise, helping to shape processes, applications, and best practices across industries.



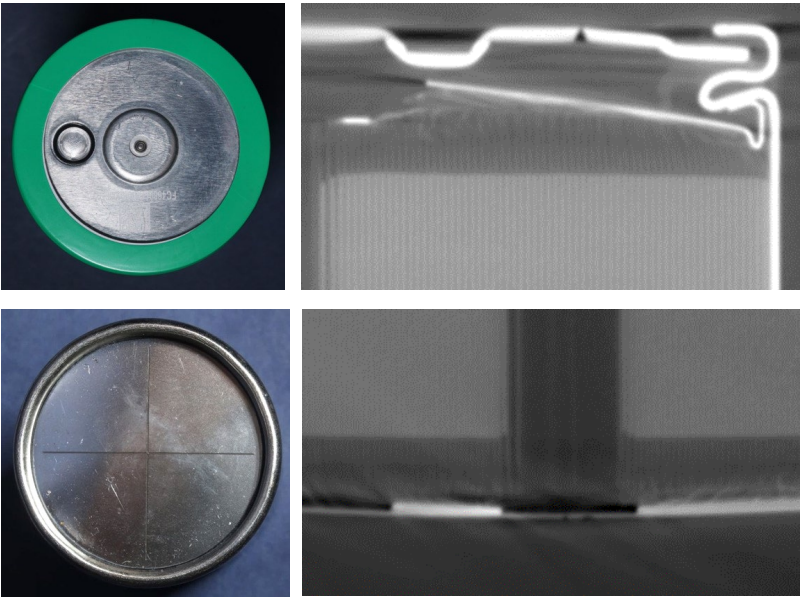
# Our Capabilities



**Litigation & Technical Strategy Support**  
Expert Witness Testimony  
Patent Support



**Technology development & optimization**



**Fire Investigations**



**Accident Reconstruction**  
Recreation Testing



**Battery Failure Investigations & Analysis**



**Customized Testing**

# Project Examples

## Root Cause of Samsung Note7 Incidents



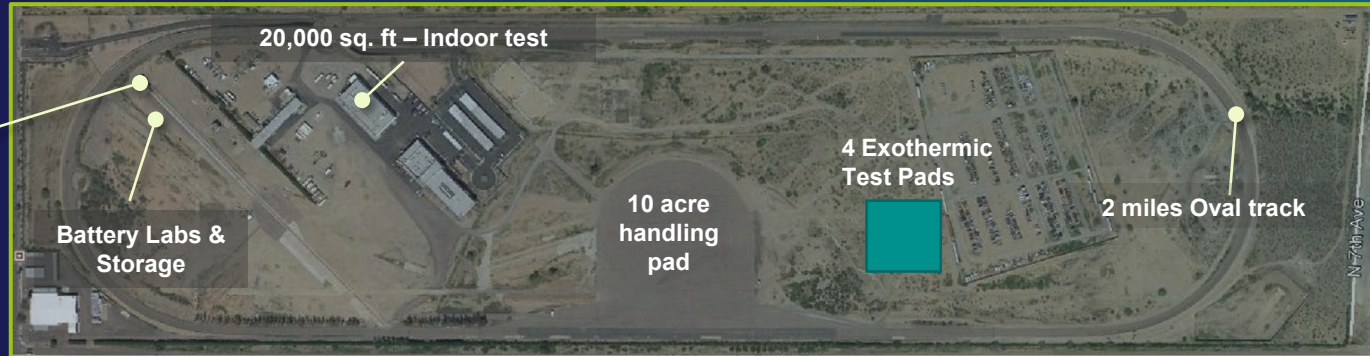
**Making Hoverboards Safer**

## Investigating BESS Facility Fire



**Evaluating LFP Cell Quality and Safety**

# Large Scale Testing in Phoenix



# Questions?

**Let's Discuss.**



**Jan Swart**

[jswart@exponent.com](mailto:jswart@exponent.com)

Principal  
Vehicle Engineering



**Kevin White**

[kwhite@exponent.com](mailto:kwhite@exponent.com)

Principal  
Polymer Science & Materials  
Chemistry



**Lara Dienemann**

[ldienemann@exponent.com](mailto:ldienemann@exponent.com)

Associate  
Materials & Corrosion  
Engineering